



jordanfishwick

7 Silk Mill, Mill Road, SK11 6TE
£825 PCM



Silk Mill Macclesfield SK11 6TE

£825 PCM



The Property

AVAILABLE MID DECEMBER FURNISHED - VIEWING HIGHLY RECOMMENDED

Ground floor loft style apartment offering modern accommodation in a convenient location.

This spacious apartment is sure to be a popular option with its proximity to the town centre and train station making it an idea choice for those looking for a modern apartment in a central location .

Communal entrance hall, open plan lounge, dining room and fully fitted kitchen with washing machine, electric hob and oven and fridge with freezer box, under stairs storage. Stairs leading to double bedroom and modern fitted bathroom with shower over bath.

To the outside there is private allocated parking.

Contact Macclesfield 01625 502222 £825.00pcm

COUNCIL TAX A

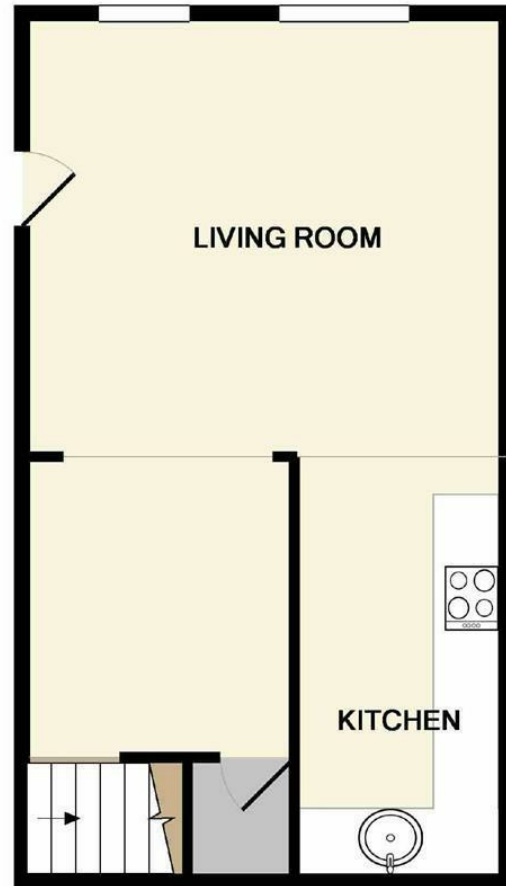
EPC D

- MODERN DUPLEX APARTMENT
- ONE BEDROOM
- OFF ROAD PARKING
- EXCELLENT LOCATION FOR TOWN CENTRE AND TRAIN STATION
- COUNCIL TAX A
- EPC D

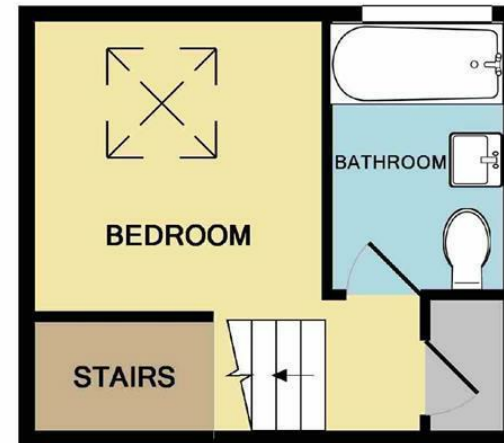


Energy Efficiency Rating		
	Current	Potential
Very energy efficient - lower running costs		
(92 plus) A		
(81-91) B		
(69-80) C		
(55-68) D	58	66
(39-54) E		
(21-38) F		
(1-20) G		
Not energy efficient - higher running costs		
England & Wales		EU Directive 2002/91/EC





GROUND FLOOR



1ST FLOOR

Measurements are approximate. Not to scale. Illustrative purposes only
Made with Metropix ©2018



These particulars are believed to be accurate but they are not guaranteed and do not form a contract. Neither Jordan Fishwick nor the vendor or lessor accept any responsibility in respect of these particulars, which are not intended to be statements or representations of fact and any intending purchaser or lessee must satisfy himself by inspection or otherwise as to the correctness of each of the statements contained in these particulars. Any floorplans on this brochure are for illustrative purposes only and are not necessarily to scale.

Offices at: Offices at Chorlton, Didsbury, Disley, Hale, Glossop, Macclesfield, Manchester Deansgate, Manchester Whitworth Street, New Mills, Sale, Wilmslow and Withington